



- 1. .... 3
- 2. .... 3
- 3. .... 3
  - 3.1. .... 3
  - 3.2. .... 4
  - 3.3. .... 5
    - 3.3.1. .... 5
    - 3.3.2. .... 7
  - 3.4. .... 10
    - 3.4.1. .... 10
    - 3.4.2. VIEW .... 10
    - 3.4.3. Target .... 14
    - 3.4.4. .... 14
    - 3.4.5. .... 16
    - 3.4.6. .... 18
  - 3.5. NVR .... 19
  - 3.6. .... 20
    - 3.6.1. .... 20
    - 3.6.2. .... 21
    - 3.6.3. .... 21
    - 3.6.4. .... 22
  - 3.7. .... 22
- 4. .... 23
  - 4.1. .... 23
  - 4.2. .... 26
  - 4.3. NVR .... 26
  - 4.4. PC .... 26

Copyright (C) 2016 OPT Corporation, All rights reserved.

/

Windows Microsoft WindowsOperating System  
Microsoft Windows 7 Windows 8 Windows 8.1 Windows 10 Microsoft  
Corporation

OPT360Viewer

Windows

1.

' 360

NM33      NM35      NUD360

' NVR

NVR    -3

1      2      4

PTZ

'

' View

'

'

'

2.

PC

OS    Windows7 8 8.1 10

CPU   Intel Core i3            Core i5

4GB

OPT360Viewer                    PC

OPT360Viewer.exe

OPT360Viewer

3.

3.1.

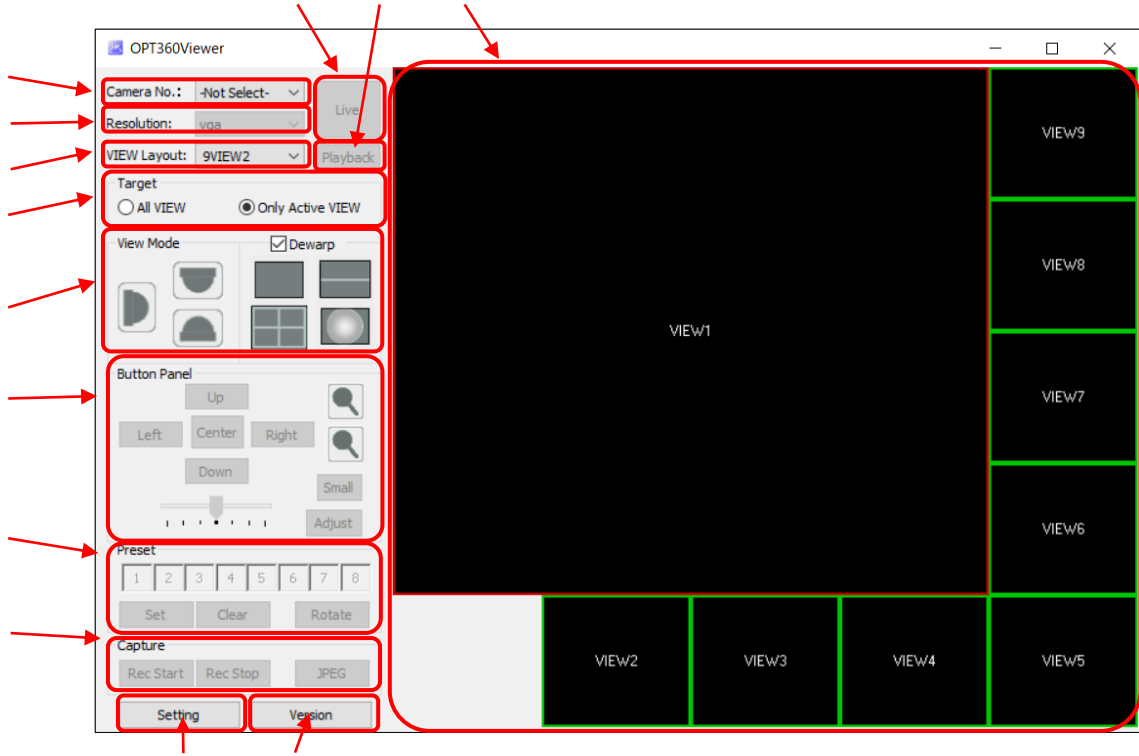
OPT360Viewer.exe



0

3.2.

2



Camera No.	VIEW
Resolution	DDIPS/NM33-IP
VIEW Layout	VIEW
Live/Stop	
Playback	NVR
VIEW Area	VIEW
Target	VIEW
View Mode	
Button Panel	
Preset	
Capture	
Setting	
Version	

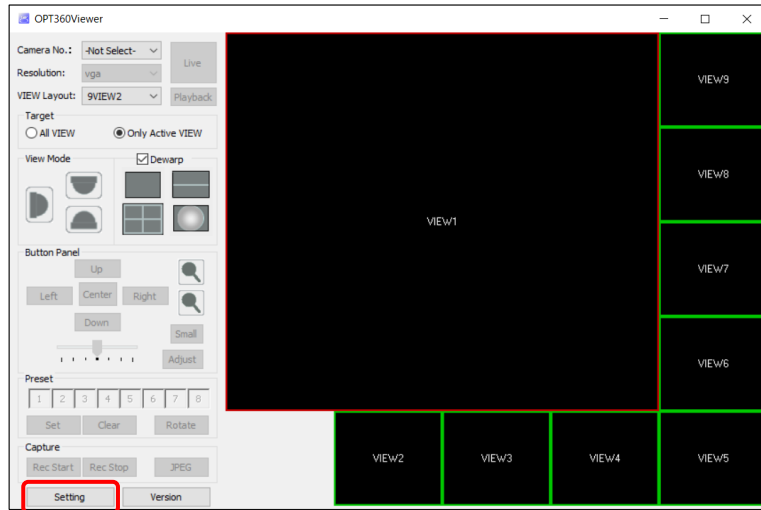
3.3.

NVR

NM35

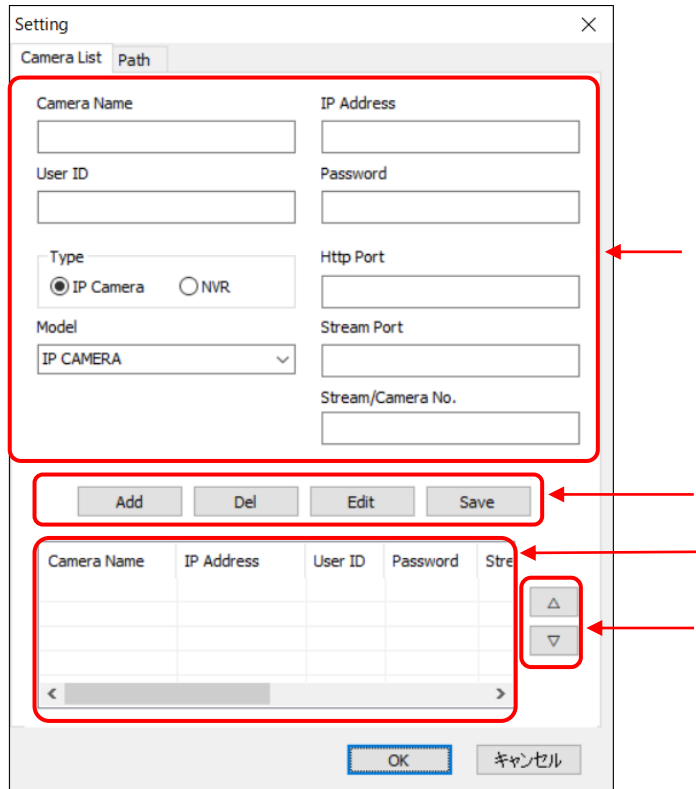
3.3.1.

Setting



Dialog

Camera List



Dialog

4.1.

Camera Name

IP Address

IP

NVR

NVR IP

User ID

ID

ID

NVR

NVR

ID

ID

Password

NVR

NVR

Type

'

IP Camera

' NVR

NM35

NVR

Model

Http Port

HTTP

NVR

NVR HTTP

Stream Port

' NM35 /NUD360

RTSP

' DDIPS /NM33-IP

Remote Service

' IPB -300F-IPW

Http Port

' NVR

NVR RTSP

Stream/Camera No.

NVR

NVR

Add

Add

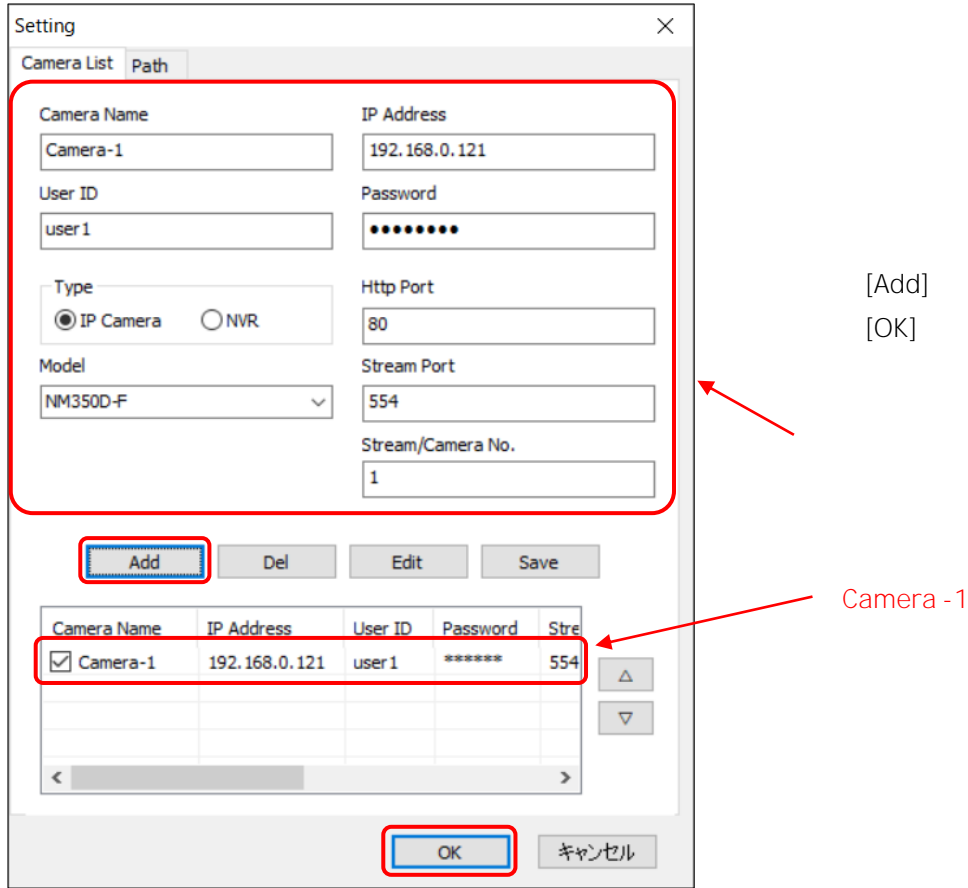
32

OK

Dialog

Ö

Dialog



3.3.2.

Edit

Save

OK

Dialog

Del

Ö

Dialog

Dialog

OK

Dialog

Dialog

0

Dialog

Setting

Camera List Path

Camera Name: Camera-7 IP Address: 192.168.0.127

User ID: user1 Password: \*\*\*\*\*

Type:  IP Camera  NVR

Http Port: 80

Model: NM350D-F Stream Port: 554

Stream/Camera No.: 1

Add Del Edit Save

Camera Name	IP Address	User ID	Password
<input checked="" type="checkbox"/> Camera-1	192.168.0.121	user1	*****
<input checked="" type="checkbox"/> Camera-2	192.168.0.122	user1	*****
<input checked="" type="checkbox"/> Camera-3	192.168.0.123	user1	*****
<input checked="" type="checkbox"/> Camera-4	192.168.0.124	user1	*****

OK キャンセル

Edit

Save

OK

Del

OK

Camera -3

2

,  
,  
,

OK

Camera No.



Setting

Camera List Path

Camera Name IP Address

User ID Password

Type  
 IP Camera  NVR

Http Port

Model  
IP CAMERA

Stream Port

Stream/Camera No.

Add Del Edit Save

Camera Name	IP Address	User ID	Password
<input checked="" type="checkbox"/> Camera-1	192.168.0.121	user1	*****
<input type="checkbox"/> Camera-2	192.168.0.122	user1	*****
<input type="checkbox"/> Camera-3	192.168.0.123	user1	*****
<input checked="" type="checkbox"/> Camera-4	192.168.0.124	user1	*****

OK キャンセル

[OK]

[OK]

Camera-2 Camera-3

Camera No.: -Not Select-

Resolution: -Not Select-

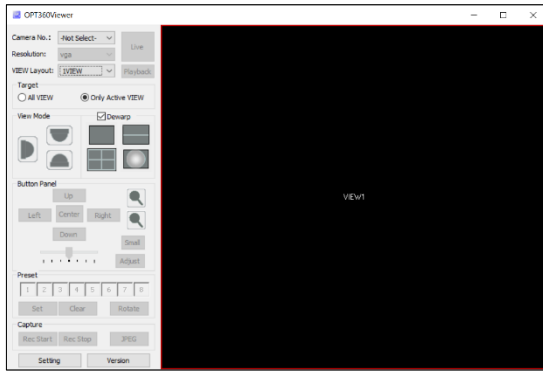
VIEW Layout: Camera-1, Camera-4, Camera-5, Camera-6, Camera-7

Target  
 All VIEW  Only Active VIEW

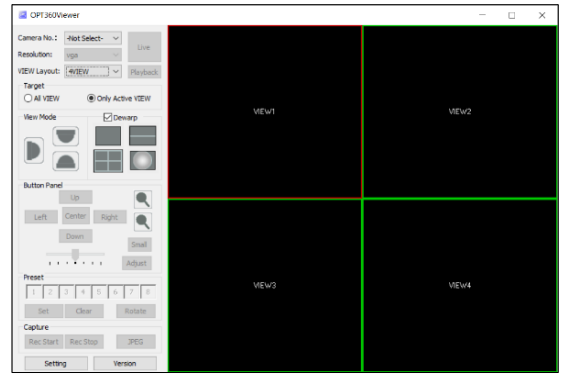
Live Playback

Camera-2 Camera-3

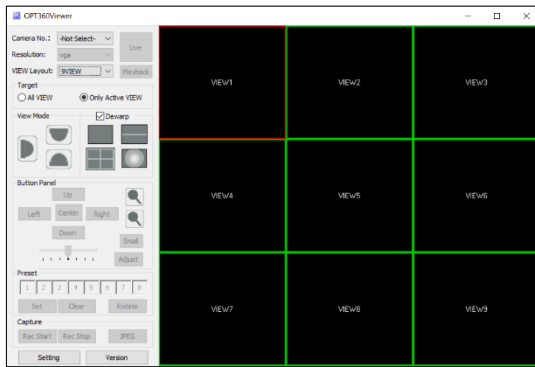




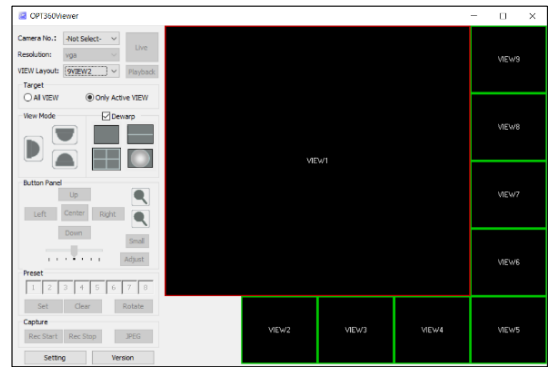
1VIEW



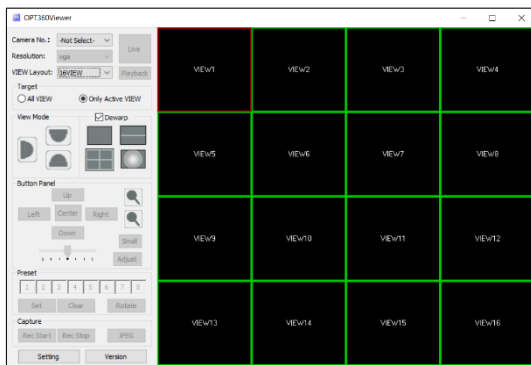
4VIEW



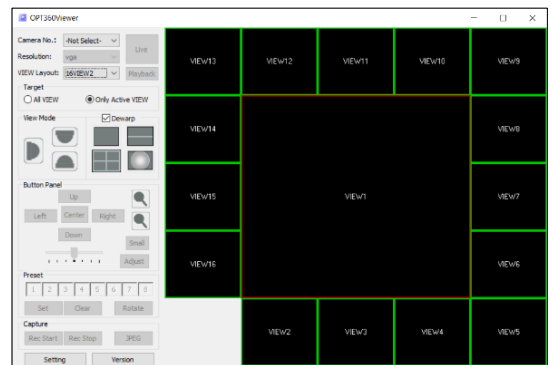
9VIEW



9VIEW2

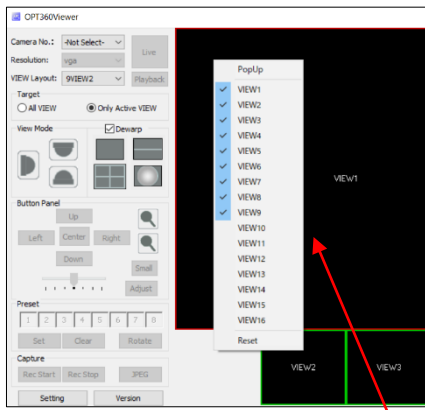


16VIEW

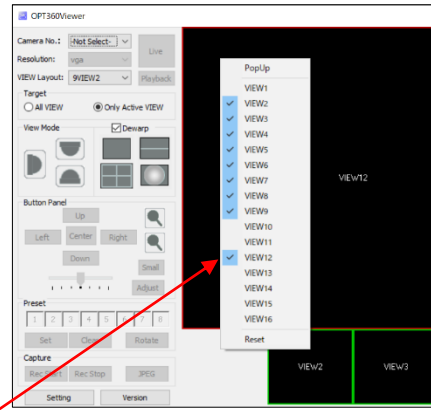


16VIEW2

VIEW  
 VIEW  
 VIEW VIEW VIEW  
 VIEW VIEW VIEW  
 VIEW VIEW VIEW VIEW VIEW  
 9VIEW2 16VIEW2 VIEW VIEW VIEW VIEW



VIEW



VIEW

VIEW

VIEW

VIEW

VIEW

VIEW

VIEW

VIEW

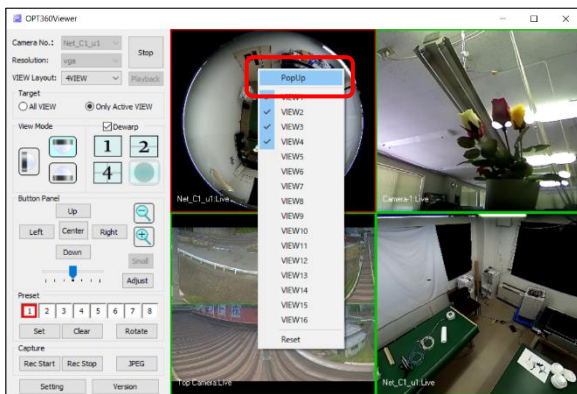
VIEW

VIEW

VIEW

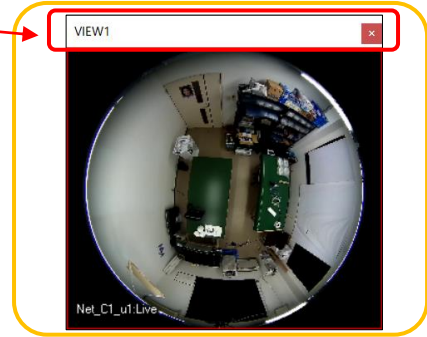
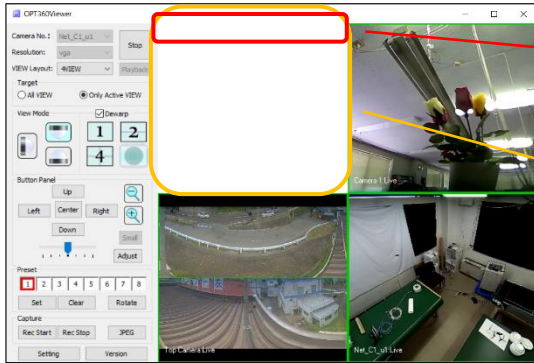
PopUp

VIEW



VIEW



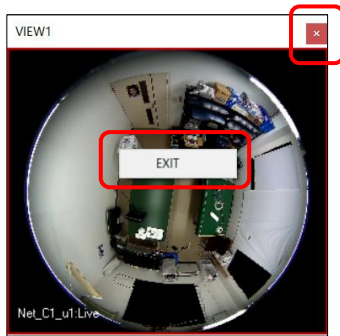


VIEW

VIEW

EXIT

Ö



EXIT

Ö

VIEW

VIEW

ESC

Enter

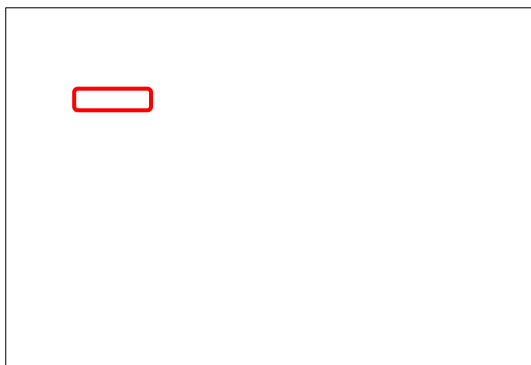
3.4.3. Target

Target View Mode Button Panel Preset Capture

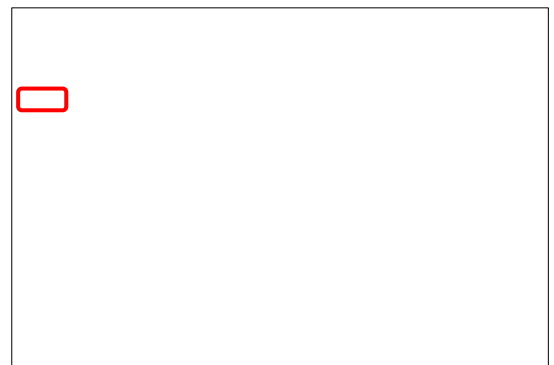
' All VIEW VIEW Active VIEW  
VIEW  
' Only Active VIEW VIEW Active VIEW  
Active VIEW



Target VIEW



Only Active VIEW



All VIEW

3.4.4.

View Mode



View Mode



























