

Rooftop type 360° camera PLC220-12M

Quick Manual

OPT Corporation



Adhesive Tape installation type

1. Operational Environment

OS: Windows 8.1 / Windows 10 / Windows 11

PC: to be performed with the above OS

Environment: Temperature : -20℃~+50℃、Humidity : ~80%Rh

2. Installation

(1) Installation of camera

- Clean the area where you will install the camera, such as on the roof of your car, with a neutral detergent beforehand. If oil or moisture is attached, the adhesive strength of the double-sided tape may be impaired.

- Decide where to install the camera and the direction of the camera, then peel off the cover sheet from the double-sided tape on the bottom of the camera and install it.

Please be careful not to allow dirt or dust to adhere to the double-sided tape.

- Double-sided tape is very strong. The camera does not move at all after installation. Please note that if you try to force it to the side, you may damage the vehicle body.

- To remove the camera, insert a thin plastic spatula under the double-sided tape and slowly peel it off from the edge.

※ Orientation of the view can be adjusted by the application software.

(2) Pull the camera cable (USB cable) into the car.

- The camera cable (USB, 5m) serves as power supply and image transmission.
- Leave the camera cable inside the vehicle through the gap in the window or the gap in the door gasket. Do not get caught in the metal part of the door.
- It is recommended to simply fasten the camera cable on the roof with tape or clamps so that it does not flutter while driving.
- Be careful not to bend the camera cable or damage the coating.
- The USB connector of the camera cable is not waterproof. Please be careful not to get it wet.
- Connect the USB connector (Type-A) to the USB port of the PC in the car.

The following explains how to view images on a PC.

For further operation, please refer to the PLCViewer User's manual that is downloadable from our home page:

<http://www.optnagano.co.jp/EN/product/UM.html>

3. Live View

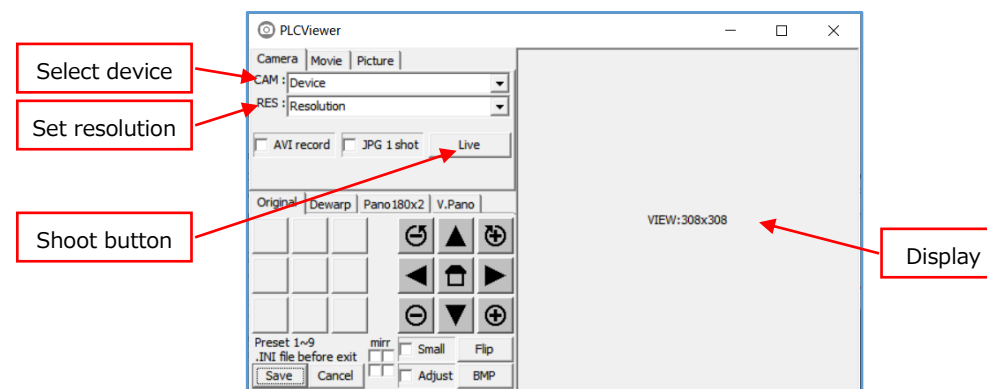
(1) Open the camera viewer application software (PLCViewer).

- ① Copy the [PLCViewer.exe] execution file from the attached CD or the sales company's website to any folder on the PC.

- ② Double-click the icon of the PLCViewer.exe.

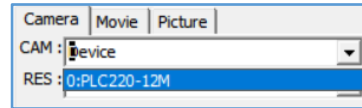


- ③ When started, the following main screen will be displayed.

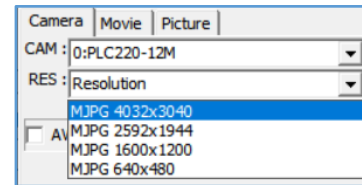


(2) Display the live view

① CAM: device – click the right ▼ to select a camera from the pull-down-menu. As a rooftop camera, select “PLC220-12M”.



② RES: resolution – click the right ▼ to select a suitable resolution of the camera from the pull-down-menu.



As an example, MJPEG 4032x3040 is selected in the right figure.

※ Resolutions will appear after the device was selected.

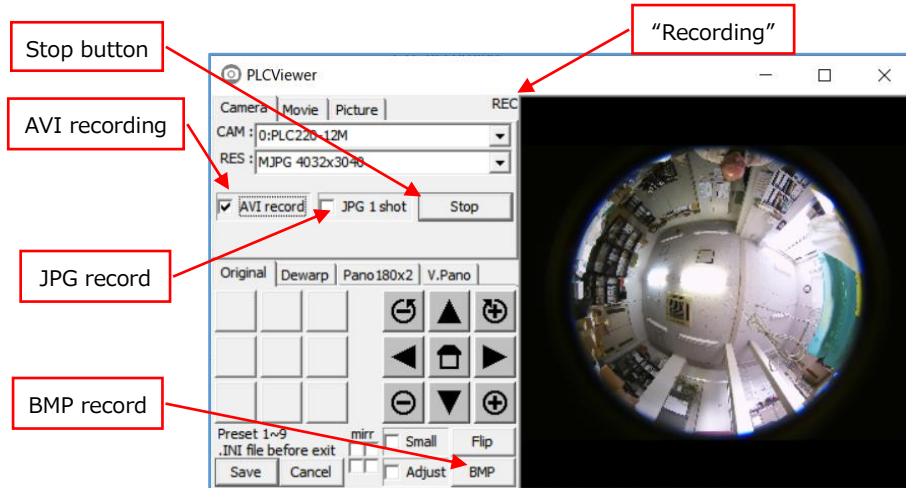
③ Click [LIVE] button starts indicating the live view and the button will be changed into [Stop].

(3) Recording

① Record the live movies (.AVI file)

If the [AVI Record] button is clicked and checked ☒ during live video is displaying (i.e. shooting), the video will be recorded. While recording, "Recording" is displayed on the right side of the [Picture] tab.

To end the recording, click the [AVI record] button again (the check is removed) or click the [Stop] button to stop the video display.



② Recording the still images (.jpg or .BMP file)

- When the [☐JPG 1 shot] button is clicked while the image is being displayed, a ☒check will be entered, and one raw fisheye image will be saved as a still image, and the ☐check will be removed.
- If the [BMP] button is clicked while the image is being displayed, one displayed image will be saved as a still image.

③ The recorded video is saved in the working folder of PLCViewer.exe (usually the same folder with PLCViewer.exe) with "Year/Month/Day_Hour/Minute/Second_millisecond.xxx".

4. Exit the shooting

To exit, click the [x] button on the main screen, or click [Save] or [Cancel]. Please refer to the instruction manual for each operation.

5.

