

360° Panorama Camera

NM33D-M-PLV

User Manual

OPT Corporation



1. Operating environment

OS: Windows 7 / Windows 8.1 / Windows 10 (32 bit version, 64 bit version)

PC: an environment in which the above OS operates normally

Color number of PC screen: Maximum (32 bits) or more

Operating environment: Temperature: -10°C~50°C, humidity: ~ 80% Rh

2. Installation

(1) Placing the camera

- Clean the place where the camera is to be installed, such as on the roof of the car, beforehand with a mild detergent or the like. If oil and moisture are attached, adhesion of double-sided tape may be impaired.
- Determine the location where the camera is installed and the direction of the camera, then peel off the thin paper from the bottom of the camera and place it. Please be careful not to adhere dust to the adhesive surface.
- Double-sided tape is very strong. After installation the camera will not move at all. Please note that you may damage the car body if you try to forcibly shift it sideways.
- When removing the camera, please insert a thin plastic spatula etc. on the bottom of double-sided tape and slowly peel off from the edge.
- Double-sided tape is provided as a maintenance part. Please contact the distributor.

(2) Retract the camera cable into the car

- Camera cable (USB, 5 m) is used for power supply and video transmission.
- Pull the camera cable into the car through the gap of the window or door. Please do not get caught in the metal edge of the door.
- It is recommended to simply keep it on the roof with tape or clamp so that the

camera cable will not clatter while running.

- Please be careful not to bend the camera cable or damage the cable covering.
- The USB connector side of the cable is not waterproof. Please be careful not to get it wet.
- Connect the USB connector to the USB port of the PC inside the car.

3. Monitor the video (For details, please refer to Forest-N's instruction manual)

(1) Start the camera operation application (Forest-N)

- ① Copy the executable file [Forest-N.exe] from the supplied CD to an arbitrary folder on the PC.

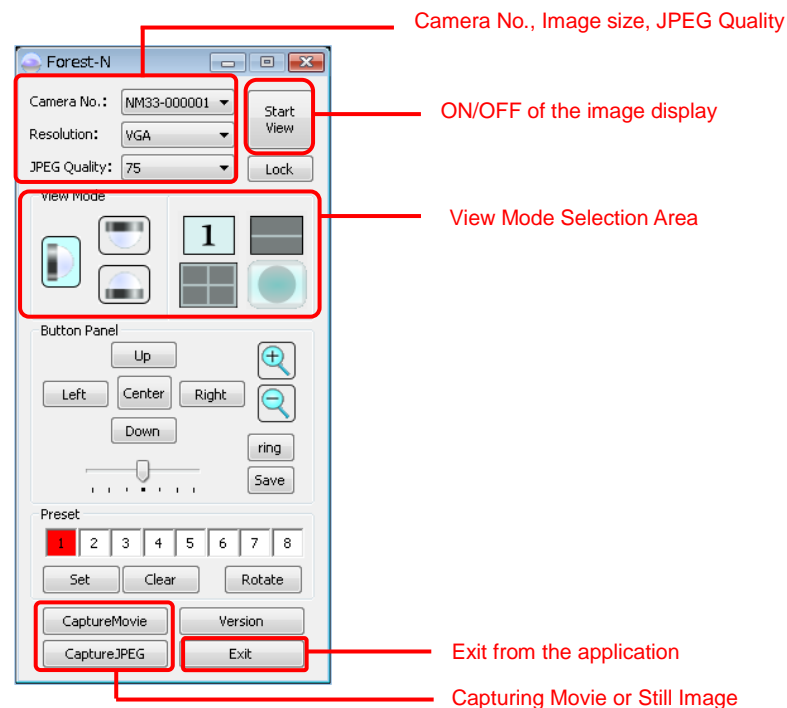
- ② Double click the Forest-N.exe icon.



Forest-N.exe

- ③ When starting up, the following main screen will be displayed.

- ④ Click [Start View]. The image is displayed on the right side.



(2) Setting the shooting mode

- ① When you want to expand the recorded image later

For the image size, select LARGE size.

A non-dewarped 360 ° circle image (1536 × 1536 size) is output.

Select [LARGE] from the [Resolution] combo box.

When LARGE size is selected, you cannot change the view mode or control the camera.

- ② When monitoring and recording the dewarped video such as the 2x180 panorama.

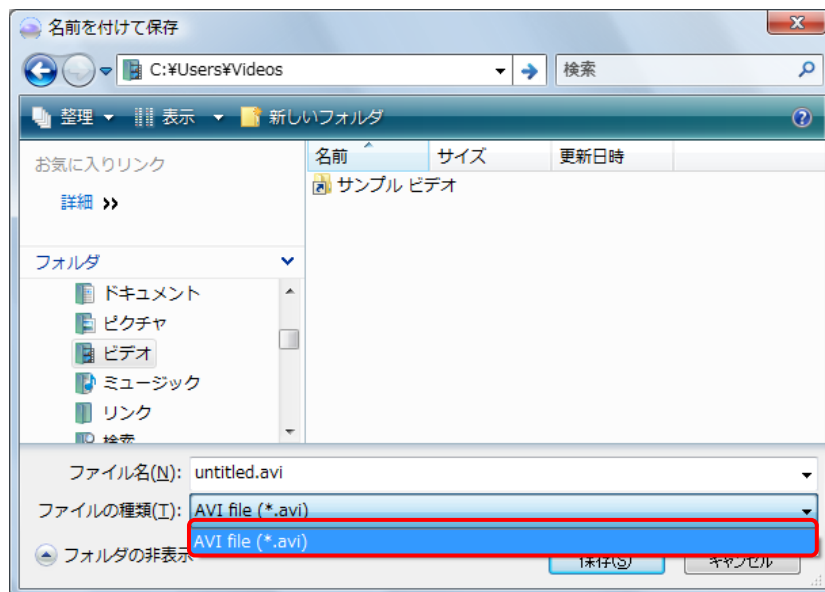
For the image size, select VGA or QVGA size.

In the view mode selection area, set the dewarping mode.

Set the orientation of the camera upward. (When shipped, it is "upward")

(3) Recording

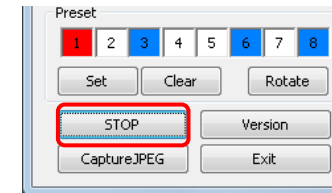
- ① Click [CaptureMovie] in the main screen.
- ② When the window below opens, select the save destination, file name and file type, and save the movie. The file type is AVI file only.
- ③ The AVI file actually saved will have the recording time information of "year, month, day, hour, minute, second" after the file name specified in the window below.



- ④ Approximate capacity of movies to be recorded: approx. 42 MB / 1 min

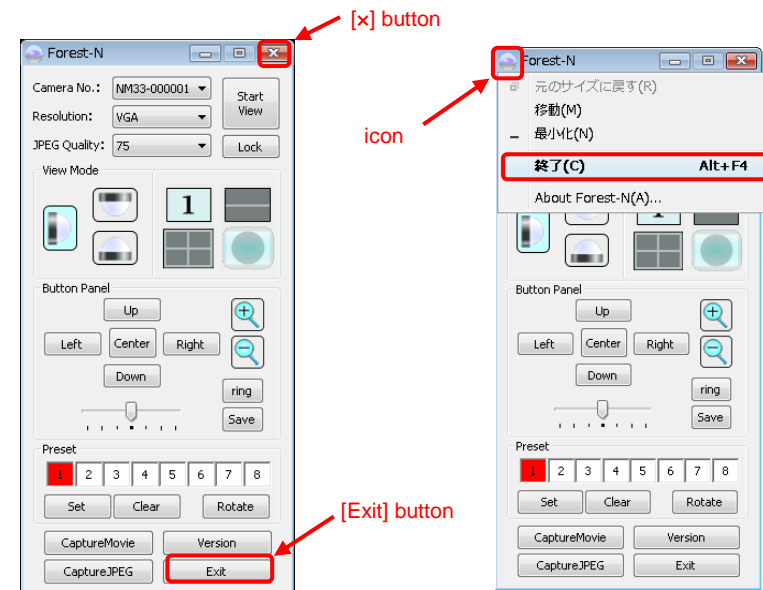
Note: If you do not specify a file name, the file "year, month, day, hour, minute, second.avi" is automatically generated.

- ⑤ When stopping the movie capturing, click [CaptureMovie] button which has changed to [STOP] while capturing is running.



4. Stop shooting

To exit, click the [×] button or [Exit] on the main screen, or click the icon in the upper left of the main screen and select [終了(c)] from the menu.



5. Play back the recorded video

Please play with the versatile application software that can play AVI file.

(ex. Microsoft Media Player, GOM Player, etc.)

For instructions on how to play, please refer to the description of each playback software.