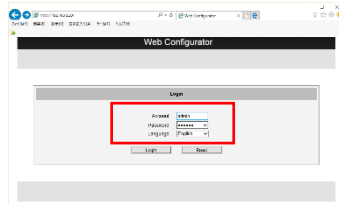


Step 5: Log-in

1. On the Login page, type the Account and Password.

Default


Account: **admin**
Password: **123456**

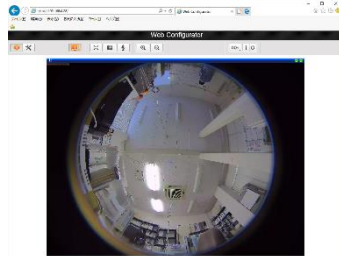


2. Select **Language**, if necessary.

3. Click **Login**.

The **Live View** screen appears.

4. Click  to access the **Setup** menu to modify the camera settings.



Important notice: As the default Account and Password are the contents which are generally used and are something to tend to access from outside. It's recommended not to use default ones just as it is and to establish something peculiar.

Step 6: Live View Monitoring with dewarping

Using the exclusively designed application software "OPT360Viewer" provided in the enclosed CD, you can monitor the live view in dewarped patterns such as the e-PTZ, 180x2 panorama, digital auto panning, etc.

Note: As for the recording of image, please refer to the instruction manual of recorder.

Quick Manual

This guide contains the basic information you need to quickly setup the Camera. For detailed information on installations or operations, please refer to the Installation Manual, Software Manual, and IP Utility Manual in the CD provided with the camera.

Step 1: Check the contents in the package

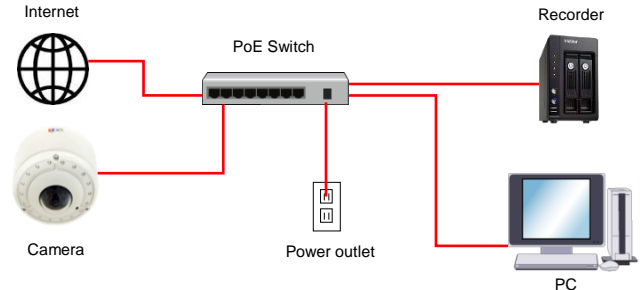
First of all, unpack the camera package and check if all contents are surely contained. The contents are described in the Installation Manual.

Step 2: Install the camera.

Following the Installation Manual, install the camera.

Step 3: Connect the devices.

Following the Installation Manual, connect all relevant devices. The below shows a basic example of device connection.



Please read all instructions carefully and use safely.

Step 4: Access the camera

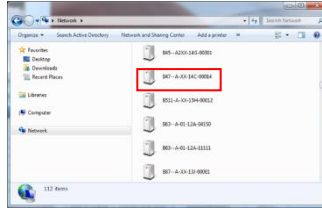
A: On Network with DHCP Server / Router (Automatic IP)

1. Connect the camera and the PC within the same network segment. Once connected, an IP address will be assigned to the camera.
2. Find the camera via Windows Explorer or IP Utility.

By Windows Explorer

- (1) Go to **Start > My Computer > Network**.
- (2) Double-click on the device name.

Note: As a browser, Microsoft Internet Explorer 9.0 and later is recommended.



By IP Utility

- (1) Start IP Utility from the CD provided with the camera.
 - (2) Run IP Utility to start searching for network devices.
 - (3) Click the IP address of the camera intended to operate.
3. The Web Configurator appears with the IP address of the camera on the URL bar. Login to access the camera.



B: On Network without DHCP Server (Default IP)

1. Configure the IP settings of your PC to match with the network segment of the camera.

Camera Defaults

IP Address :
192.168.0.100
Subnet :
255.255.255.0

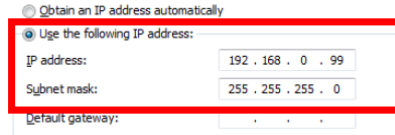


PC can be assigned with

IP Address (different from camera)
Example: **192.168.0.99**
Subnet (same with camera)
255.255.255.0

How to configure the PC IP address ? (in case of Windows 8.1)

1. Open **Control Panel > Network and Internet > Network and Sharing Center > Change adapter settings**.
2. Local Area Connection > Properties > Internet Protocol Version 4 (TCP/IPv4) > Property.
3. In the window of Property of the Internet Protocol Version 4 (TCP/IPv4), make a check on "Use the following IP address".
4. Input the IP address **192.168.0.99** (number 1 ~ 254 unused in the same network) and the subnet mask **255.255.255.0**. Then press [OK] button.



5. Open a web browser and type **192.168.0.100** on the URL address bar. The Web Configurator appears. Login to access the camera.